

Notice of Archaeology works near Leather Lane

September 2020 | www.hs2.org.uk

Notification



High Speed Two (HS2) is the new high speed railway for Britain. We are continually reviewing the works on our construction sites in line with Government and Public Health England (PHE) advice on dealing with COVID-19. The Government's current strategy makes it clear that construction activity can continue as long as it complies with this guidance. Please be assured that only sites that can operate within the guidelines are operational. All sites will remain under constant review. We have postponed all face-to-face engagement events and meetings and have put in place a number of channels to communicate with communities, such as letters and phone calls, as well as updates and alerts from each of the local community websites. You can sign up for regular updates in your local area at www.hs2inbucksandox.co.uk

What we will be doing?

As part of our continuing works ahead of the construction of the railway we need to undertake some further work in your area, these works will consist of:

- Construction of a small temporary site compound
- Archaeological investigations

These works are planned to begin in early October 2020 and are scheduled to complete by the end of January 2021.

Site compound

To enable us to carry out the archaeological works, we will need to construct a small compound. To build the compound we will initially use mobile welfare facilities. Once built, the compound will include:

- Temporary trackway surfacing for access across the field and parking
- Office and welfare facilities alongside storage of a small amount of machinery and materials
- 24-hour security with temporary low-level lighting

If you have a question about HS2 or our works, please contact our HS2 Helpdesk team on 08081 434 434 or email hs2enquiries@hs2.org.uk

Duration of works

Archaeology works begin early October 2020 until the end of January 2021.

Normal working hours: Monday to Friday 8am – 6pm and occasionally Saturday 8am – 1am

What to expect

Slight additional traffic on local roads.

Noise from the equipment used for the works.

Site storage and welfare vehicle operated with 24hr security and lighting. Short term road closure and diversion route for site establishment and subsequent removal. Traffic management near our site entrance.

What we will do

Manage any impacts such as traffic and noise with the aim of reducing them.

Notice of Archaeology works near Leather Lane

Notification



www.hs2.org.uk

Access and site establishment

In order to access the site we need to first take delivery of temporary track matting. This is then laid across the field from the existing field access on Kings Lane. The track matting, subsequent welfare units and excavators will be delivered to site from the A413 to the site using the following roads:

- B485 Chesham Road › Frith Hill › Potter Row › Kings Lane
- The return journey to the A413 will use the same route

This route has been used previously when constructing the habitat mitigation sites in the area and provides the least disruptive route to the site. The maximum number of HGV deliveries per day will be 12 HGV vehicles or less. The HGV site establishment deliveries are expected to take up to one week in duration, with a similar period required upon completion for site removal.

Short term road closures

We have identified that a short narrow section of Kings Lane located near to the work area needs to be closed to public traffic during the period of site establishment and removal. This is required to allow the delivery vehicles to access and leave the site safely without meeting oncoming public traffic. The map enclosed shows the extent of the closure.

Direct road access linking The Lee and South Heath will remain open throughout these works.

The closure is expected to be in place for a period of one week from the 5 October 2020. This closure will then be removed and reintroduced for a further week once our archaeology investigation is completed in January 2021. The closure and diversion route will be in operation Monday to Friday each day between 7am and 6pm Monday to Friday. Outside of these times the road will be open as normal. The signposted diversion route during these periods is enclosed below. Advanced warning signage will be erected ahead of the works detailing the closure areas.

Local properties located close to the start of the closure will be provided with access, this includes household deliveries. Through access for these residents in the direction of Bowood Lane during the closure will not be permitted during the closure periods for safety and access reasons.

Emergency services will be provided through access at all times.

Notice of Archaeology works near Leather Lane

www.hs2.org.uk

Archaeology

We will begin our investigations in the area shown on the map in this notification. These works will enable a greater understanding of archaeology in the area. This will require the excavation of over 150 trenches ranging up to 80 metres in length and 2 metres wide. Once the work is completed, the areas will be reinstated. The investigations will be undertaken by teams of archaeologists using mechanical excavators and hand tools. There will be archaeologists, plant operators and management team on site. In addition, a small number of supervision staff will be visiting the site to ensure the work is progressing to plan and is being done safely.

How may this affect you?

We will be working hard to ensure any impacts on residents are kept to a minimum during these and all our future works. You may notice a little extra traffic on the road immediately around the sites with workers moving to and from the site, and occasional delivery vehicles.

There may be some noise from the machinery. All machinery will be restricted to running between the hours of 8am and 6pm Monday to Friday and 8am to 1pm on a Saturday. For further updates about these works and HS2 in general, please visit www.hs2inbucksandox.co.uk where you can sign up to news alerts.

Notification



Notice of Archaeology works near Leather Lane

Notification



www.hs2.org.uk

Map of archaeological mitigation works



Contact our HS2 Helpdesk team on **08081 434 434**

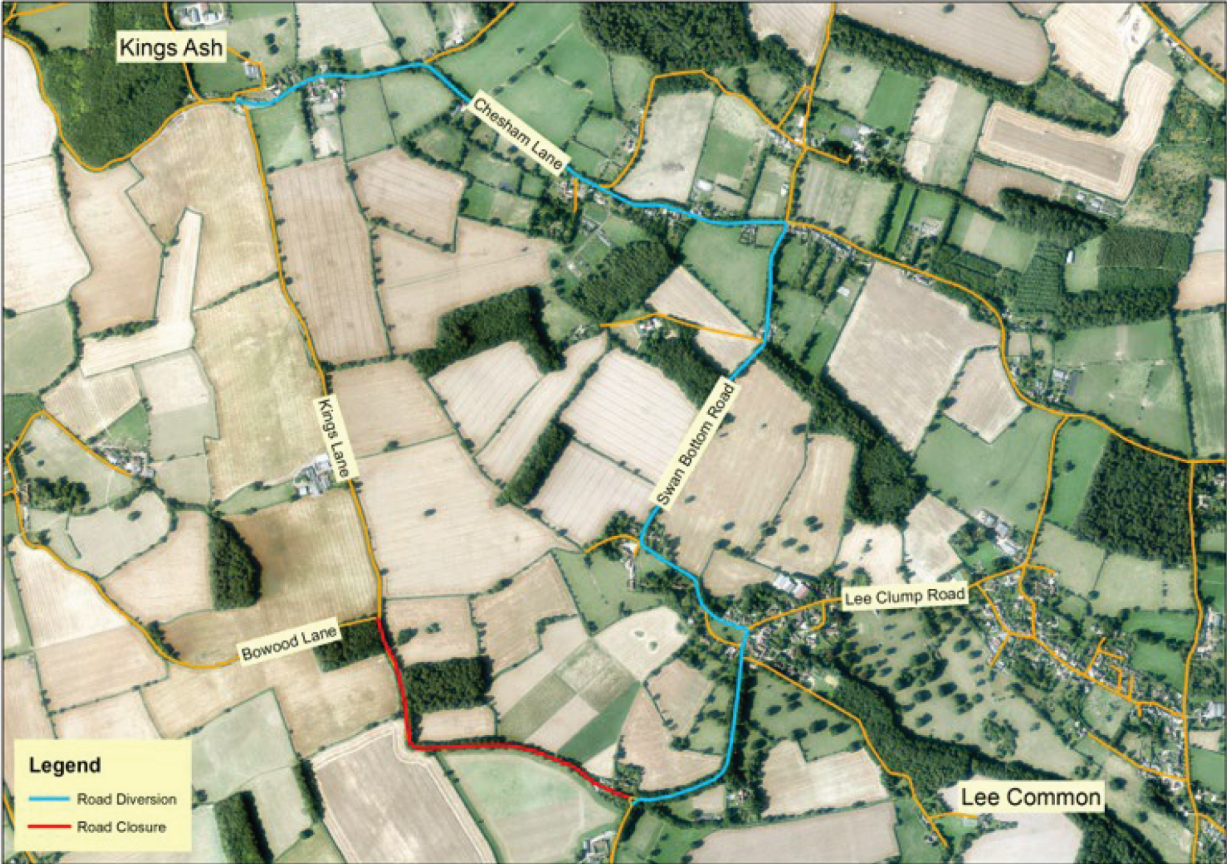
Notice of Archaeology works near Leather Lane

Notification



www.hs2.org.uk

Map of signed diversion route during the road closure



Keeping you informed

We are committed to keeping you informed about work on HS2. This includes ensuring you know what to expect and when to expect it, as well as how we can help.

Residents' Charter and Commissioner

The Residents' Charter is our promise to communicate as clearly as we possibly can with people who live along or near the HS2 route.
www.gov.uk/government/publications/hs2-residents-charter

We also have an independent Residents' Commissioner whose job is to make sure we keep to the promises we make in the Charter and to keep it under constant review. Find reports at:
www.gov.uk/government/collections/hs2-ltd-residents-commissioner

You can contact the Commissioner at:
residentscommissioner@hs2.org.uk

Construction Commissioner

The Construction Commissioner's role is to mediate and monitor the way in which HS2 Ltd manages and responds to construction complaints. You can contact the Construction Commissioner by emailing:
complaints@hs2-cc.org.uk

Property and compensation

You can find out all about HS2 and properties along the line of route by visiting:
www.gov.uk/government/collections/hs2-property
Find out if you're eligible for compensation at:
www.gov.uk/claim-compensation-if-affected-by-hs2

Holding us to account

If you are unhappy for any reason you can make a complaint by contacting our HS2 Helpdesk team. For more details on our complaints process, please visit our website:
www.hs2.org.uk/how-to-complain

Contact Us

Contact our HS2 Helpdesk team all day, every day of the year on:

 Freephone **08081 434 434**
 Minicom **08081 456 472**
 Email **hs2enquiries@hs2.org.uk**

 Write to:
FREEPOST
HS2 Community Engagement

Website **www.hs2.org.uk**

To keep up to date with what is happening in your local area, visit:
www.hs2inyourarea.co.uk

Please contact us if you'd like a free copy of this document in large print, Braille, audio or easy read. You can also contact us for help and information in a different language.

HS2 Ltd is committed to protecting personal information. If you wish to know more about how we use your personal information please see our Privacy Notice
<https://www.gov.uk/government/publications/high-speed-two-ltd-privacy-notice>

Reference number: FUS_AWN_0118 HS2-EW-FUS-Ph1-Ar-Ce-C2-Prog-works-49-17/09/2020

High Speed Two (HS2) Limited, registered in England and Wales.
Registered office: Two Snowhill, Snow Hill Queensway, Birmingham B4 6GA.
Company registration number: 06791686. VAT registration number: 888 8512 56.